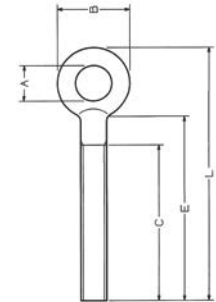


# CARFER

## A575B

STAINLESS STEEL EYE - Steel AISI 316

Size mm	A mm	B mm	C mm	E mm	L mm	S.W.L. Kg	Weight Kg
M 6	10	21	55	60	79	225	0,016
M 8	11	24	55	60	86	410	0,03
M 10	14	31	60	68	100	650	0,07
M 12	16	37	66	74	112	930	0,09

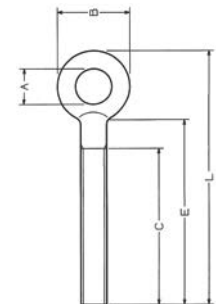



 \* Object not suitable for lifting things or people

## A575B

OCCHIO IN ACCIAIO INOX - Acciaio AISI 316

Misura mm	A mm	B mm	C mm	E mm	L mm	S.W.L. Kg	Peso Kg
M 6	10	21	55	60	79	225	0,016
M 8	11	24	55	60	86	410	0,03
M 10	14	31	60	68	100	650	0,07
M 12	16	37	66	74	112	930	0,09

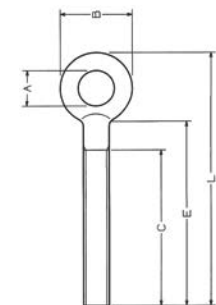


 \* Accessorio non destinato al sollevamento di cose o persone

## A575B

ŒIL EN ACIER INOX - Acier AISI 316

Mesure mm	A mm	B mm	C mm	E mm	L mm	S.W.L. Kg	Poids Kg
M 6	10	21	55	60	79	225	0,016
M 8	11	24	55	60	86	410	0,03
M 10	14	31	60	68	100	650	0,07
M 12	16	37	66	74	112	930	0,09



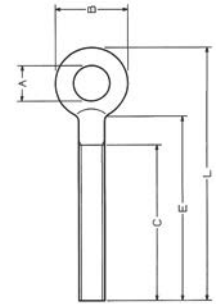
 \* Object pas destiné au levage de choses ou personnes


# CARFER

## A575B

ÖSE AUS ROSTFREIEM STAHL - Stahl AISI 316

Abmessung mm	A mm	B mm	C mm	E mm	L mm	S.W.L. Kg	Gewicht Kg
M 6	10	21	55	60	79	225	0,016
M 8	11	24	55	60	86	410	0,03
M 10	14	31	60	68	100	650	0,07
M 12	16	37	66	74	112	930	0,09

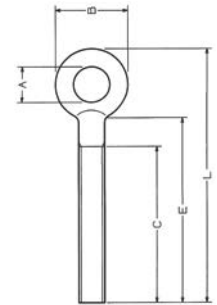



 \* Zubehör nicht geeignet für das Heben von Dingen oder Personen

## A575B

HEMBRILLA CERRADA DE ACERO INOXIDABLE - Acero AISI 316

Medida mm	A mm	B mm	C mm	E mm	L mm	S.W.L. Kg	Peso Kg
M 6	10	21	55	60	79	225	0,016
M 8	11	24	55	60	86	410	0,03
M 10	14	31	60	68	100	650	0,07
M 12	16	37	66	74	112	930	0,09

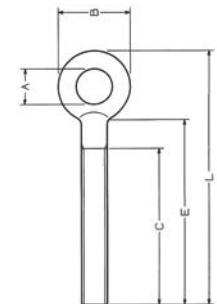


 \* Accesorio no destinado a la elevación de cosas o personas

## A575B

OLHAL FECHADO INOX PARA ESTICADOR - Aço AISI 316

Medida mm	A mm	B mm	C mm	E mm	L mm	S.W.L. Kg	Peso Kg
M 6	10	21	55	60	79	225	0,016
M 8	11	24	55	60	86	410	0,03
M 10	14	31	60	68	100	650	0,07
M 12	16	37	66	74	112	930	0,09



 \* Acessório não destinado a elevar objetos ou pessoas