

THE MXqs "ONE CLICK" HOLE SAW SYSTEM

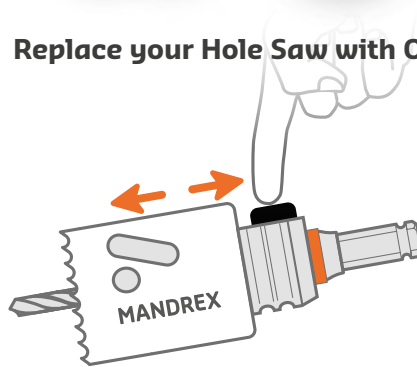
Experience the future in arbor systems: better, faster and more efficient than all other existing arbors in the market.

MXqs

**ONE
CLICK**



Replace your Hole Saw with ONE CLICK



To remove the Hole Saw to use another diameter, just push the button and exchange the Hole Saw. Slide on another Hole Saw and you are ready to go.



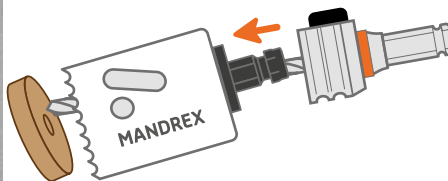
Enlarge previously drilled holes



Simple! You can now use the smaller Hole Saw to center the drill. It is easy to drill a hole with the desired diameter. Extra adapter needed.



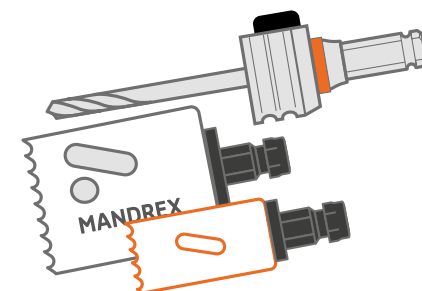
Eject the plug with ONE CLICK



Just push the button, move the Hole Saw back and forth and you have released the core! Drill the next hole easily and quickly, without struggling or waiting.



1 Arbor for large and small Hole Saws



Only one arbor needed for all Hole Saw diameters. No further need to have 2 arbors for large and small diameters.

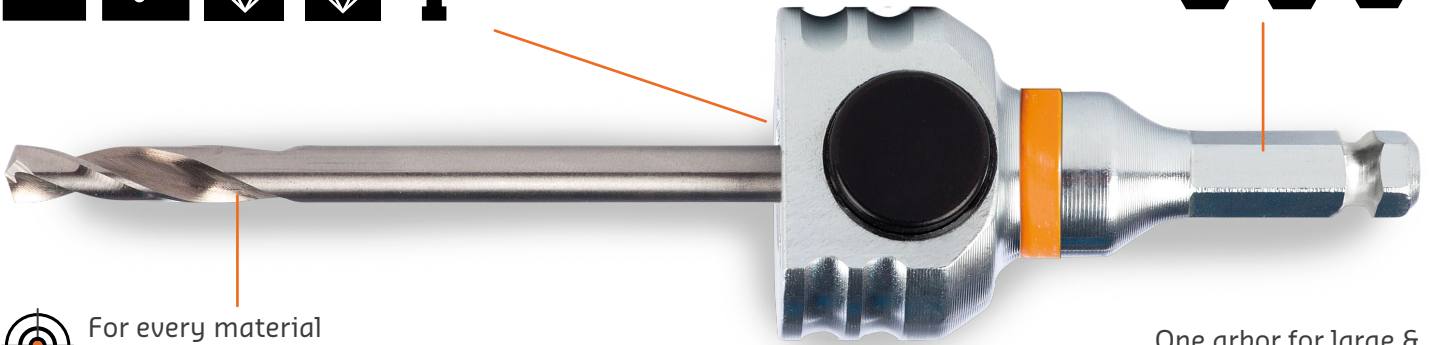
replace and mount every Hole Saw with ONE CLICK



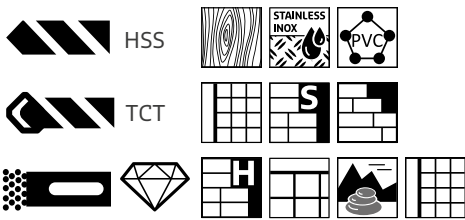
ONE
CLICK

For all drilling machines

SDS+ 8,5 11 P



For every material there is a suitable pilot drill



One arbor for large & small diameter Hole Saws

Ø14-210mm



Exchanging Hole Saws is a matter of pushing the button and slide. With the MXqs arbors you only require one arbor for large and small Hole Saws. With our unique ONE CLICK arbor system it only takes seconds. Making use of the unique Mandrex MXqs arbor system brings you all its unique features with one simple CLICK.

Just push the button and start saving time, money and frustration!



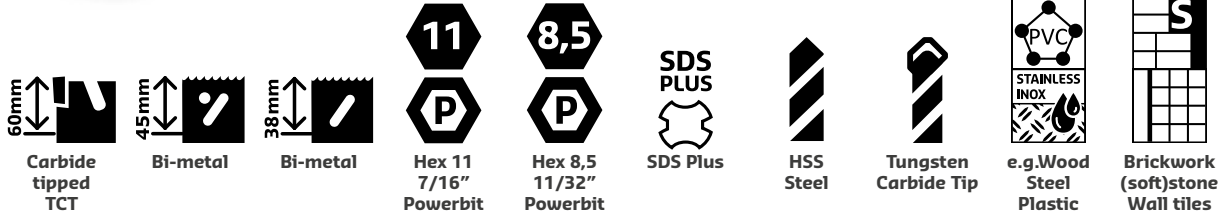
The patented MandreX MXqs "ONE Click" system is licensed to Mandrex Hole Saw System in the Netherlands for distribution worldwide

MXqs ARBORS


The MXqs arbors can be used on all drilling machines, in combination with all Hole Saws. Just choose the correct combination of arbor and pilot drill and start drilling!

MXqs

**ONE
CLICK**



Arbor Part No.	Can be used with this Hole Saw			Machine chuck size		Pilot drill		Material to drill	
	TCT	Bi-metal	Bi-metal	Hex 11 7/16"	Hex 8,5 11/32"	HSS	Tungsten Carbide	Wood/Steel/Plastic	Brickwork/Stone/Wall tiles
MX200020B	●	●		●		●		●	
MX200021B	●			●			●		●
MX200022B			●	●		●		●	
MX200024B	●	●			●	●		●	
MX200025B	●				●		●		●
MX200026B		●			●	●		●	
MX200020SB	●	●				●	●	●	
MX200021SB	●					●	●		●
MX200022SB			●			●	●	●	

	MX200020B	MXqs Arbor Complete For TCT & Bi-metal Hole Saws With HSS Pilot drill	Drill Chuck Hex 11 - 7/16"PB. E.g. for wood, plastics, steel, stainless	With pilot drill MX2P0063B L=125mm
	MX200021B	MXqs Arbor Complete For TCT Hole Saws. With Carbide tipped pilot drill	Drill Chuck Hex 11 - 7/16"PB. E.g. for concrete, sandstone, brickwork, soft tiles	With pilot drill MX2P0062B L=125mm
	MX200022B	MXqs Arbor Complete For SHORT Bi-metal Hole Saws. With short HSS Pilot drill	Drill Chuck Hex 11 - 7/16"PB. E.g. for wood, plastics, steel, stainless	With pilot drill MX2P0064B L=105mm
	MX200024B	MXqs Arbor Complete For TCT & Bi-metal Hole Saws With HSS Pilot drill	Drill Chuck Hex 8,5 - 11/32"PB. E.g. for wood, plastics, steel, stainless	With pilot drill MX2P0063B L=125mm
	MX200025B	MXqs Arbor Complete For TCT Hole Saws. With Carbide tipped pilot drill	Drill Chuck Hex 8,5 - 11/32"PB. E.g. for concrete, sandstone brickwork, soft tiles	With pilot drill MX2P0062B L=125mm
	MX200026B	MXqs Arbor Complete For SHORT Bi-metal Hole Saws. With short HSS Pilot drill	Drill Chuck Hex 8,5 - 11/32"PB. E.g. for wood, plastics, steel, stainless	With pilot drill MX2P0064B L=105mm
	MX200020SB	MXqs Arbor SDS-PLUS Complete For TCT & Bi-metal Hole Saws With HSS Pilot drill	Drill Chuck SDS-plus. E.g. for wood, plastics, steel, stainless	With pilot drill MX2P0063B L=125mm
	MX200021SB	MXqs Arbor SDS-plus Complete For TCT Hole Saws. With Carbide tipped pilot drill	Drill Chuck SDS-plus. E.g. for concrete, sandstone brickwork, soft tiles	With pilot drill MX2P0062B L=125mm
	MX200022SB	MXqs Arbor SDS-PLUS Complete For SHORT Bi-metal Hole Saws. With short HSS Pilot drill	Drill Chuck SDS-plus. E.g. for wood, plastics, steel, stainless	With pilot drill MX2P0064B L=105mm

MXqs PILOT DRILLS



HSS Steel



Tungsten Carbide Tip



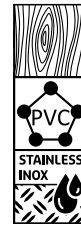
60mm Carbide tipped TCT



45mm Bi-metal



38mm Bi-metal



e.g. Wood Steel Plastic



Brickwork (soft)stone Wall tiles



Steel Stainless 1000N/mm²

Pilot drill Part No.	Pilot drill type		Can be used with this Hole Saw			Material to drill		
MX2P0062B		●	●				●	
MX2P0063B	●		●	●		●		
MX2P0064B	●				●			
MX2P0068B	●			●				●

MX2P0062B



Pilot drill with Tungsten carbide percussion drill tip (TCT) - L=125mm Ø7mm

E.g. for concrete, (sand-)stone, brickwork, tiles

MX2P0063B



Pilot drill HSS M2 with 135 degrees split point for smooth drilling - L=125mm Ø6,35mm

E.g. for wood, plastics, (stainless) steel

MX2P0064B



Pilot drill HSS - Short - L=105mm Ø6,35mm

E.g. for wood, plastics, (stainless) steel

MX2P0068B



Pilot drill HSS-Co with 8% Cobalt and 135 degrees split point for smooth drilling L=125mm Ø6,35mm

E.g. for Stainless/Inox, (cast-) iron, steel with tensile strength till 1000N/mm²

MXqs ADAPTERS



Diameter Hole Saw

Adapter Part No.	Qty. Pieces per pack	Ø14-30	Ø32-150	Ø152-210	Nm High Torque
MX2P0053B	3	●			
MX2P0052B	3		●		
MX2P0052HB	3			●	●



MX2P0053B

MXqs ONE CLICK adapter for all types of Hole Saws

1/2"-20UNF thread for Hole Saw diameters Ø14-30mm



MX2P0052B

MXqs ONE CLICK adapter for all types of Hole Saws

5/8"-18UNF thread for Hole Saw diameters Ø32-150mm



MX2P0052HB

MXqs High Torque ONE CLICK adapter for all types of Hole Saws, including screws

For Hole Saw diameters Ø152-210mm



MX2P0052FB

MXqs ONE-CLICK adapter special

For hole saws with M24 thread. 3 pieces/pack

MXqs HOLE ENLARGEMENT



MX2P0052HEB

Set with 3 adapters to enlarge the previously drilled hole.

- 1 adapter for using Hole Saws with 1/2" thread
- 1 adapter for using Hole Saws 1/2" and 5/8" thread
- 1 adapter for using Hole Saws with 5/8" thread

