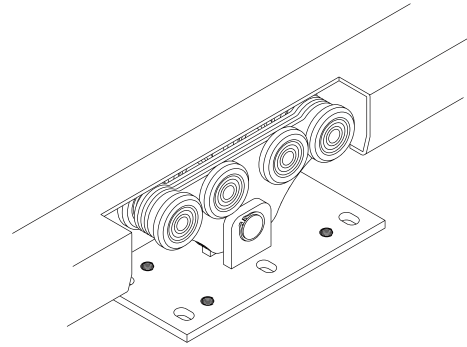
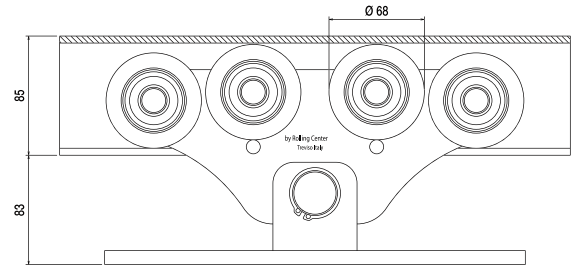
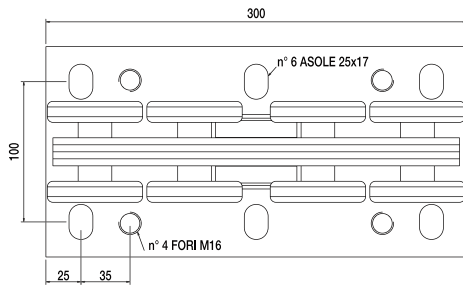
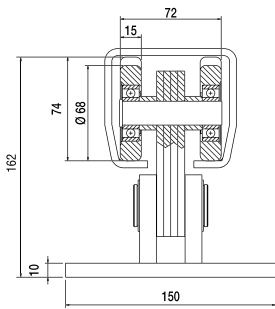




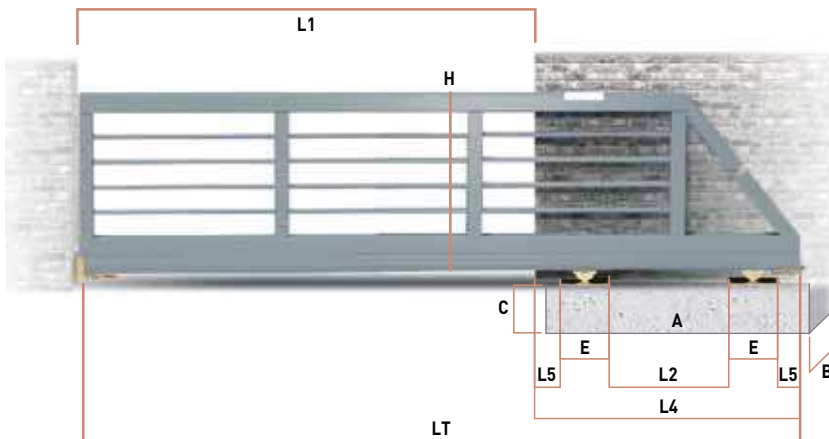
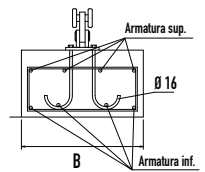
- I** Carrello "Medio" per cancelli autoportanti
- UK** "Medio" carriage for cantilever gates
- D** "Medio" Rollenapparat für freitragende Schiebetore
- F** Chariot "Medio" pour portails autoportants
- E** Carro "Medio" para puertas autoportantes
- RUS** Средняя тележка для раздвижных ворот



Articolo - Article	L1	Peso max cancello Gate max weight	Abbinabile Combining	
Riferimento - Reference	Max ML			N°
CA 4 RS	LT 00 80 80	8	600	GIPI 5 RG / GZ
				2
				21



Peso max cancello Gate max weight	L1 (mt)	L2 (mt)	L4 (mt)	L5 (mt)	LT (mt)	H (mt)	E (mt)	A (mt)	B (mt)	C (mt)	Portata max carrello Carriage strength	Fondazione Armatura	
600	4,0	1,20	2,2	0,2	6,2	1,7	0,3	2,5	0,6	0,5	1200	4 Ø 12	4 Ø 12
600	5,0	1,50	2,5	0,2	7,5	1,7	0,3	2,8	0,6	0,5	1200	4 Ø 12	4 Ø 12
600	6,0	1,80	2,8	0,2	8,8	1,7	0,3	3,2	0,6	0,5	1200	4 Ø 12	4 Ø 12
600	7,0	2,10	3,1	0,2	10,1	1,7	0,3	3,7	0,6	0,5	1200	7 Ø 12	4 Ø 12
600	8,0	2,40	3,4	0,2	11,4	1,7	0,3	3,7	0,6	0,5	1200	7 Ø 12	4 Ø 12



LT = L1+L4 L2 = 30% di L1 L4 = L2+(E+L5) x2

Accessori Abbinabili / Combining accessories

CA 4 RS	x2	41 P	x2
50 P	x2	GIPI 5 RG/Z	*
4RM P	x2	6 loeck	x1

* Lunghezza guida variabile
Variable track length