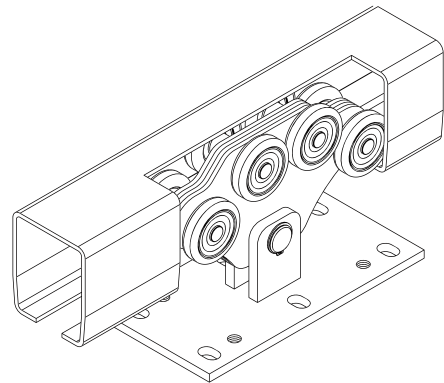
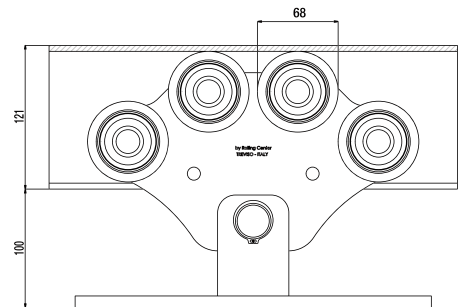
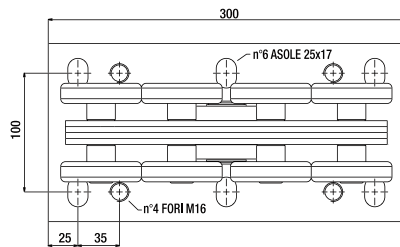
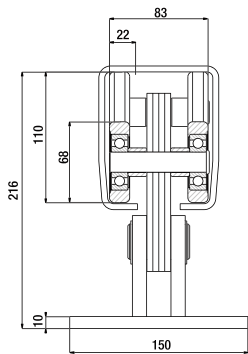




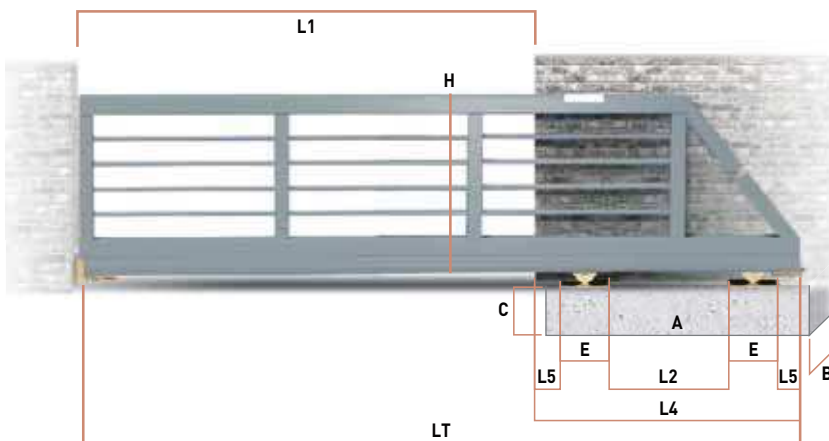
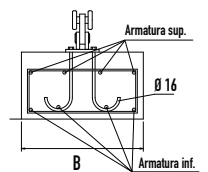
- I** Carrello "H900" per cancelli autoportanti
- UK** "H900" carriage for cantilever gates
- D** "H900" Rollenapparat für freitragende Schiebetore
- F** Chariot "H900" pour portails autoportants
- E** Carro "H900" para puertas autoportantes
- RUS** Тележка «H900» для раздвижных ворот со щетками



Articolo - Article		L1	Peso max cancello Gate max weight	Abbinabile Combining	
Riferimento - Reference		Max ML			N°
H 900	LT 03 70 80	10	900	GIPI 4 RH / HZ	2 26



Peso max cancello Gate max weight	L1 (mt)	L2 (mt)	L4 (mt)	L5 (mt)	LT (mt)	H (mt)	E (mt)	A (mt)	B (mt)	C (mt)	Portata max carrello Carriage strength	Fondazione Armatura	
900	6,0	1,80	2,8	0,2	8,8	1,7	0,3	3,1	0,6	0,5	1800	4 Ø 12	4 Ø 12
900	7,0	2,10	3,1	0,2	10,1	1,7	0,3	3,4	0,6	0,5	1800	4 Ø 12	4 Ø 12
900	8,0	2,40	3,4	0,2	11,4	1,7	0,3	3,7	0,6	0,5	1800	4 Ø 12	4 Ø 12
900	9,0	2,70	3,7	0,2	12,7	1,7	0,3	4,0	0,6	0,5	1800	7 Ø 12	4 Ø 12
900	10,0	3,00	4,0	0,2	14,0	1,7	0,3	4,3	0,6	0,5	1800	7 Ø 12	4 Ø 12



$LT = L1 + L4$ $L2 = 30\% \text{ di } L1$ $L4 = L2 + (E + L5) \times 2$

Accessori Abbinabili / Combining accessories

H 900	x2	41 H SPEC	x2
50 H	x2	41 H	153/H
4RM P	x2	GIPI4RH/Z	*
		* Lunghezza guida variabile Variable track length	
		Gloeck	x1