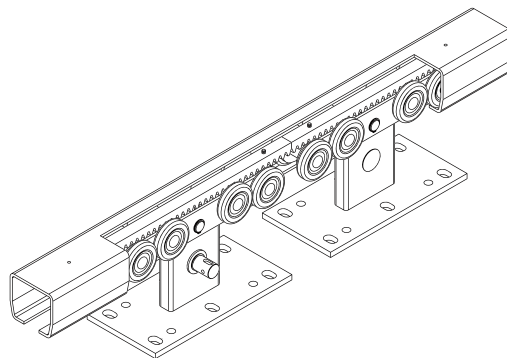
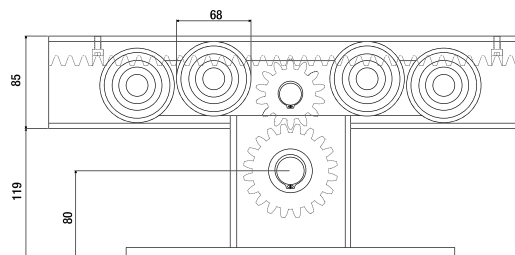
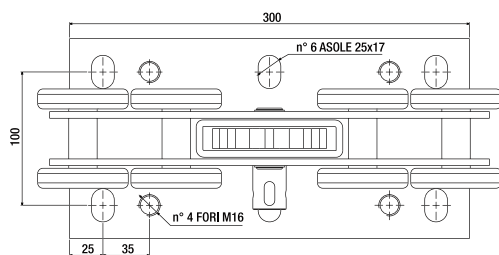
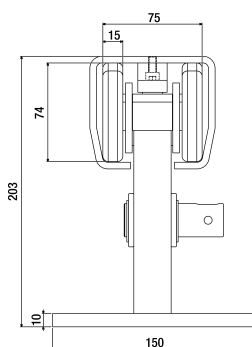




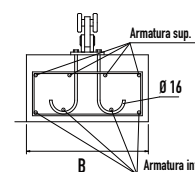
- I** Kit carrello "MotoG" per cancelli autoportanti predisposto per cremagliera interna
- UK** "MotoG" trolley kit for cantilever gates with internal dental rack
- D** "MotoG" Trolley-Kit prädisponiert für freitragende Tore mit interner Zahnstange
- F** Kit de chariots "MotoG" pour portails porte-à-faux prédisposés pour crémaillère interne
- E** Kit de carros "MotoG" para puertas autoportantes predisposto para cremalleras ocultas
- RUS** Комплект суппорта "MotoG" для самонесущих ворот, подготовленный для внутренней зубчатой рейки.



Articolo - Article	L1	Peso max cancello Gate max weight	Abbinabile Combining			
Riferimento - Reference	Max ML			N°		
KIT MOTO G	KA PM OT CT	8	600	GIP15RC/GZ + 44	1	19,5



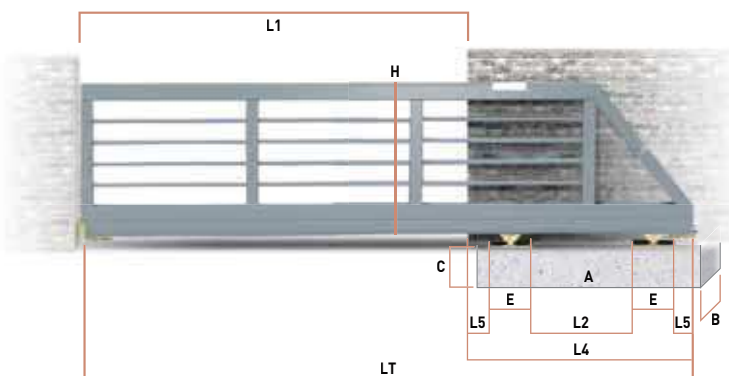
Peso max cancello Gate max weight	L1 (mt)	L2 (mt)	L4 (mt)	L5 (mt)	LT (mt)	H (mt)	E (mt)	A (mt)	B (mt)	C (mt)	Portata max carrello Carriage strength	Fondazione Armatura
600	4,0	1,20	2,2	0,2	6,2	1,7	0,3	2,5	0,6	0,5	1200	4 Ø 12 4 Ø 12
600	5,0	1,50	2,5	0,2	7,5	1,7	0,3	2,8	0,6	0,5	1200	4 Ø 12 4 Ø 12
600	6,0	1,80	2,8	0,2	8,8	1,7	0,3	3,2	0,6	0,5	1200	4 Ø 12 4 Ø 12
600	7,0	2,10	3,1	0,2	10,1	1,7	0,3	3,7	0,6	0,5	1200	7 Ø 12 4 Ø 12
600	8,0	2,40	3,4	0,2	11,4	1,7	0,3	3,7	0,6	0,5	1200	7 Ø 12 4 Ø 12



Accessori Abbinabili / Combining accessories

x1 LT M 0 80 80	x1 LT C 0 80 80	x1 Z ...	* 44
50 P	x2 GIP15RC/Z	* 41 P	x2
4RM P	x2 Gloeck	x1 DIMA 2	x1

* Lunghezza guida variabile
Variable track length



$$LT = L1 + L4$$

$$L2 = 30\% \text{ di } L1$$

$$L4 = L2 + (E + L5) \times 2$$