

CX/A

Cerniera piatta
Flat hinge / Bisagra plana



Descrizione

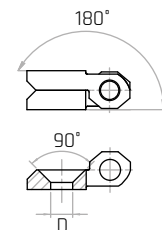
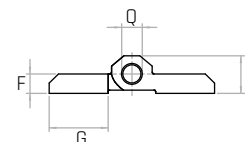
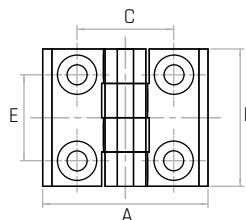
Foro liscio passante.

Smooth through hole.
Agujero liso pasante.

Materiale

Acciaio inox AISI 316.

Stainless steel (AISI 316).
Acero inoxidable (AISI 316).



Codice	Modello	A mm	B mm	C mm	E mm	F mm	G mm	P mm	Q mm	D mm	Peso gr.
7748550	CX40/A	40	40	25	25	5	14	9	4	Ø5,2	64
7748555	CX50/A	50	50	30	30	6	18	11	6	Ø6,3	100
7748560	CX60/A	60	60	36	36	8	21	15	8	Ø8,4	194