

Sistemi di montaggio, viti e bussole / Sistemi di assemblaggio per mobili / Eccentrico K12 / Tirante pieno


## Scheda tecnica del prodotto



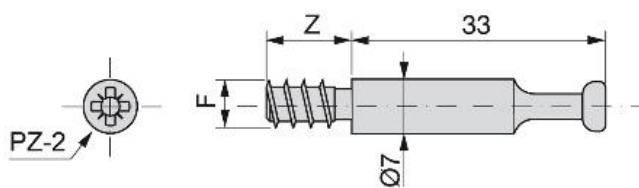
# Tirante pieno

Eccentrico K12

## Specificazioni

A	Z	F		Cod.	Finitura
33	8	bussola-m6	2500	<b>5137905</b>	Zincato bianco
33	11	Ø6	2500	<b>5137805</b>	Zincato bianco

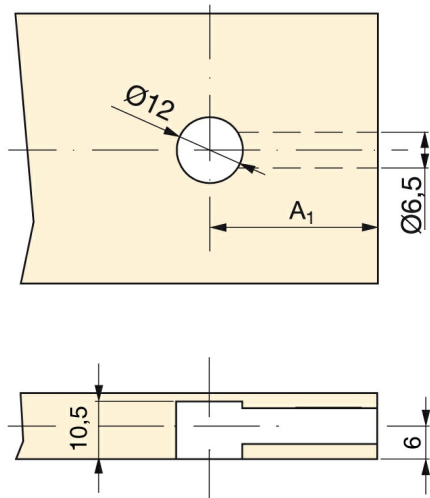
## Schema



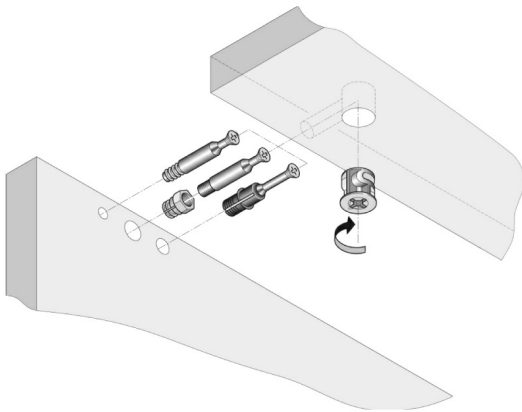
## Informazioni

Fabbricato in acciaio stampato.

## Montaggio




A	A <sub>1</sub>
23	24
27	28
33	34



## Prodotti fondamentali


### Eccentrico



	Cod.	Finitura
2500	<b>4394405</b>	Zincato bianco


Tiranti ad anelli



A	Z	F		Cod.	Finitura
23	8	bussola-m6	2500	<b>5139805</b>	Zincato bianco
23	9	Ø6	2500	<b>5140005</b>	Zincato bianco
27	8	bussola-m6	2500	<b>5139905</b>	Zincato bianco
33	8	bussola-m6	2500	<b>5137705</b>	Zincato bianco
33	11	Ø6	2500	<b>5137605</b>	Zincato bianco


Tirante con plastica



A	Z	F		Cod.	Finitura
33	11	Ø6	2500	<b>5141305</b>	Zincato bianco

Tirante Fit Ø8 ad espansione



A		Cod.	Finitura
21,6	2500	<b>5912805</b>	Zincato bianco
31,6	2500	<b>5912905</b>	Zincato bianco