



GEZE PIVOT SETS



GEZE TS 500 N / TS 550 N / TS 550 AND VARIATIONS

GEZE Door shoes for double action doors

Door shoe model CM

see Fig. 25-1

For aluminium doors.

Material: steel, drop-forged and galvanised

For almost every door system

(on request)



Door shoe model C



Door shoe model S

Version	ID no.
with flat taper	001067

Door shoe model C

see Fig. 25-2

For metal and timber doors.

Material: steel, drop-forged

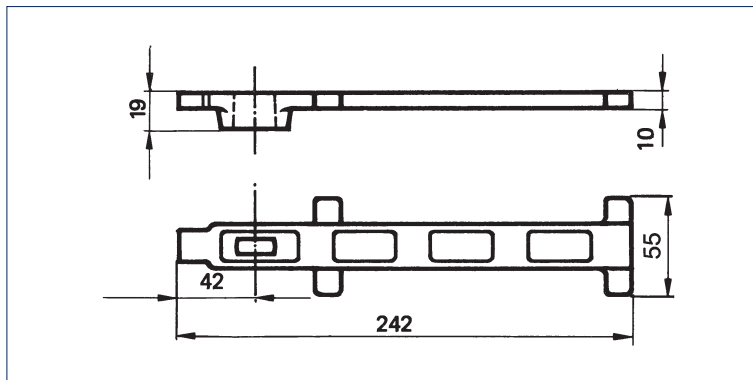


Fig. 25-1

Version	ID no.
with flat taper	007432

Door shoe model S

see Fig. 10-3

For welding on steel doors.

Material: steel

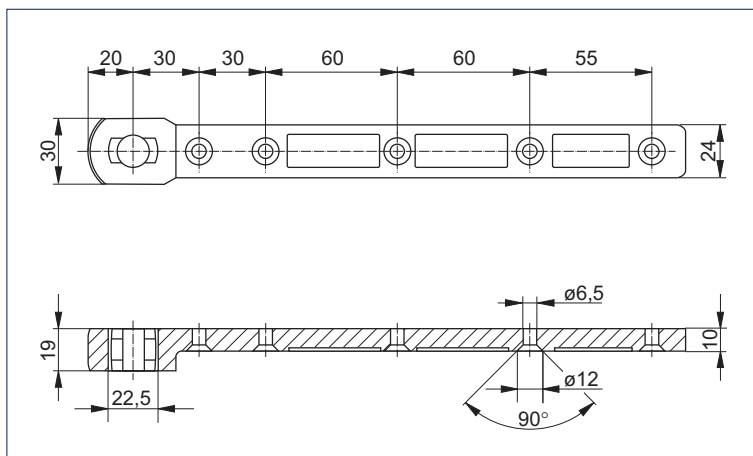


Fig. 25-2

Version	ID no.
with flat taper	007434

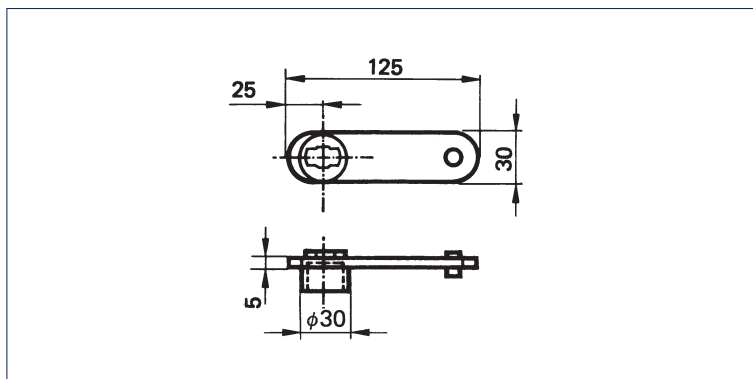


Fig. 10-3

GEZE TS 500 N / TS 550 N / TS 550 AND VARIATIONS

GEZE Upper pivots for double action doors

Upper pivot model B

see Fig. 26-1

suitable for door shoe model CM, C and S

Description	Pivot pin	ID no.
Adjustable upper pivot model B	43 mm	006371
	55 mm	000108
	65 mm	000903



Upper pivot model B



Upper pivot model C

Upper pivot model C

see Fig. 26-2

suitable for door shoe model CM, C and S

Description	Pivot pin	ID no.
Adjustable upper pivot model C	43 mm	006666
	55 mm	000905
	65 mm	000904

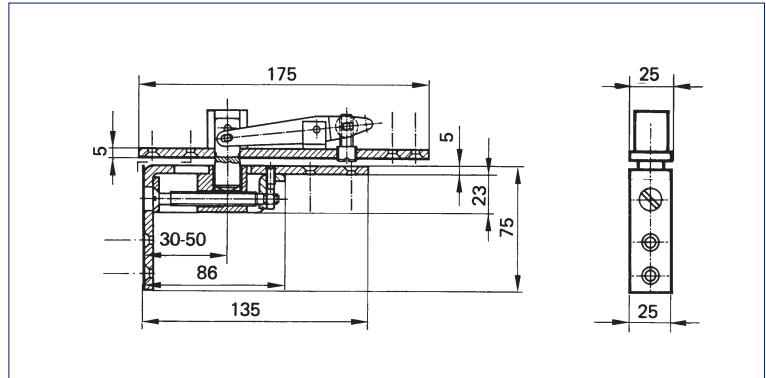


Fig. 26-1

Cover plate for top of upper pivots model B and C

Version	ID no.
LM satin	006375
LM anodised EV1	006376
LM anodised dark bronze	000876

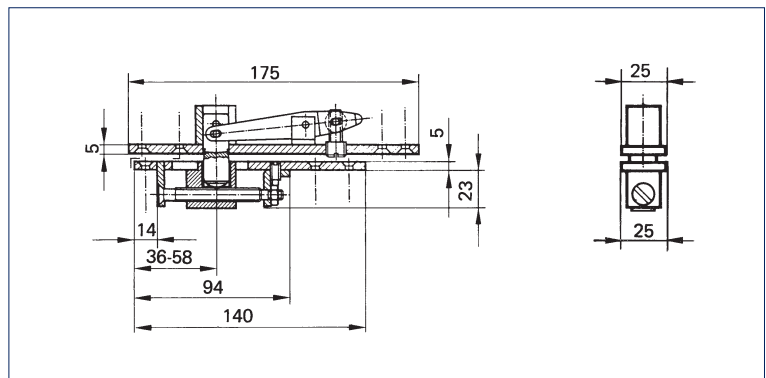


Fig. 26-2

Front plate for bottom of upper pivot model B

Version	ID no.
LM satin	006667
LM anodised EV1	006669
LM anodised dark bronze	000878

GEZE TS 500 N / TS 550 N / TS 550 AND VARIATIONS

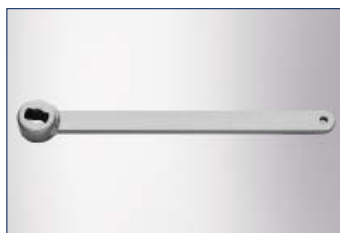
GEZE Pivot lever and guide rails

Pivot lever

see Fig. 27-1

Material: steel, galvanised
for mounting on doors with hinges

Type	Colour	ID no.
with flat taper	silver	056107
	dark bronze	056108
with square socket	silver	059599
	dark bronze	059600



Pivot lever



Guide rail

Guide rail

see Fig. 27-2

Material	Colour	ID no.
Aluminium	silver	056109
	dark bronze	056110

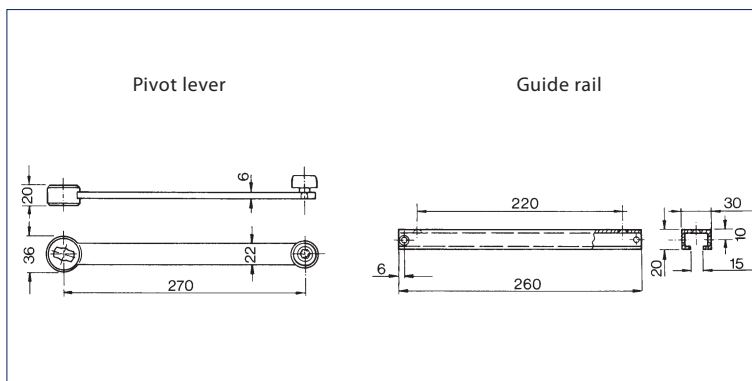
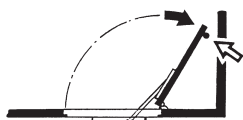


Fig. 27-1

Use door stop
for max. opening.
Installation layout,
see Fig. 27-2



Drawing	Installation	Angle
3	16 mm overlap	
	rebated door	115°
	flush door	135°
3A	rebated door	115°
	flush door	135°
4A	10 mm hinge distance	
	rebated door	
	39 mm leaf thickness	135°
	70 mm leaf thickness	115°
	flush door	
	39 mm leaf thickness	129°
	70 mm leaf thickness	102°
4	rebated door	
	39 mm leaf thickness	125°
	70 mm leaf thickness	102°
	flush door	
	39 mm leaf thickness	113°
	70 mm leaf thickness	92°

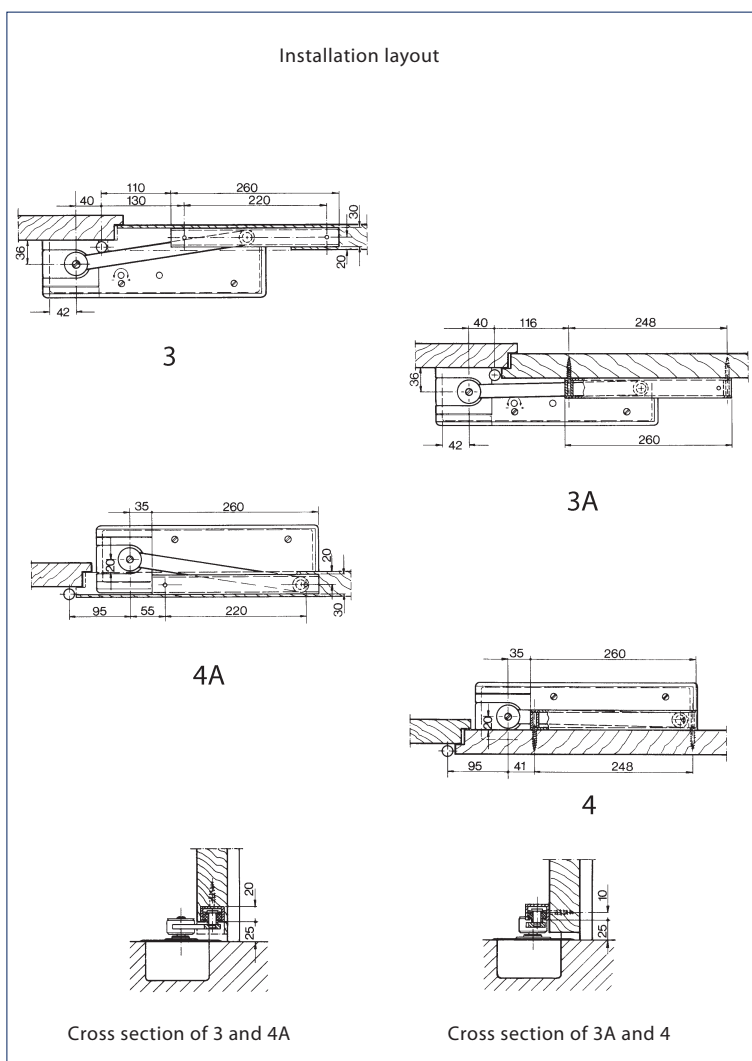


Fig. 27-2